

# Eclipse Platform Configuration

This is a rough draft - working on screenshots, and double checking the procedure. YMMV

## Initial Configuration For Debug

Eclipse versions:

Eclipse IDE for C/C++ Developers <http://www.eclipse.org/downloads/moreinfo/c.php> (Galileo)

Eclipse Java Development Tools

Start Eclipse

Choose a workspace path of the form: workspace/OCAPRI/trunk/ri (Eclipse will create the directories).

In a bash window:

```
cd workspace
svn co -N https://community.cablelabs.com/svn/OCAPRI
```

In Eclipse:

New C++ Project: Project name: RI\_Platform

New Java Project: Project name: RI\_Stack

In a bash window:

```
cd workspace/OCAPRI
./checkout_dev_env.sh -force trunk
```

In Eclipse:

Refresh both projects

In bash window:

```
cd workspace/OCAPRI/trunk/ri
ant
```

When ant finishes, the RI will have been built (outside of Eclipse).

## Adding a Debug Configuration

NOTE: For reasons not understood, certain configuration variables must be set for the Eclipse process (not configured in the debug configuration). To simplify this (and make it easier to work with various branches, etc.) there is a bash script (OCAPRI/trunk/ri/start\_eclipse.sh) that sets up the environment

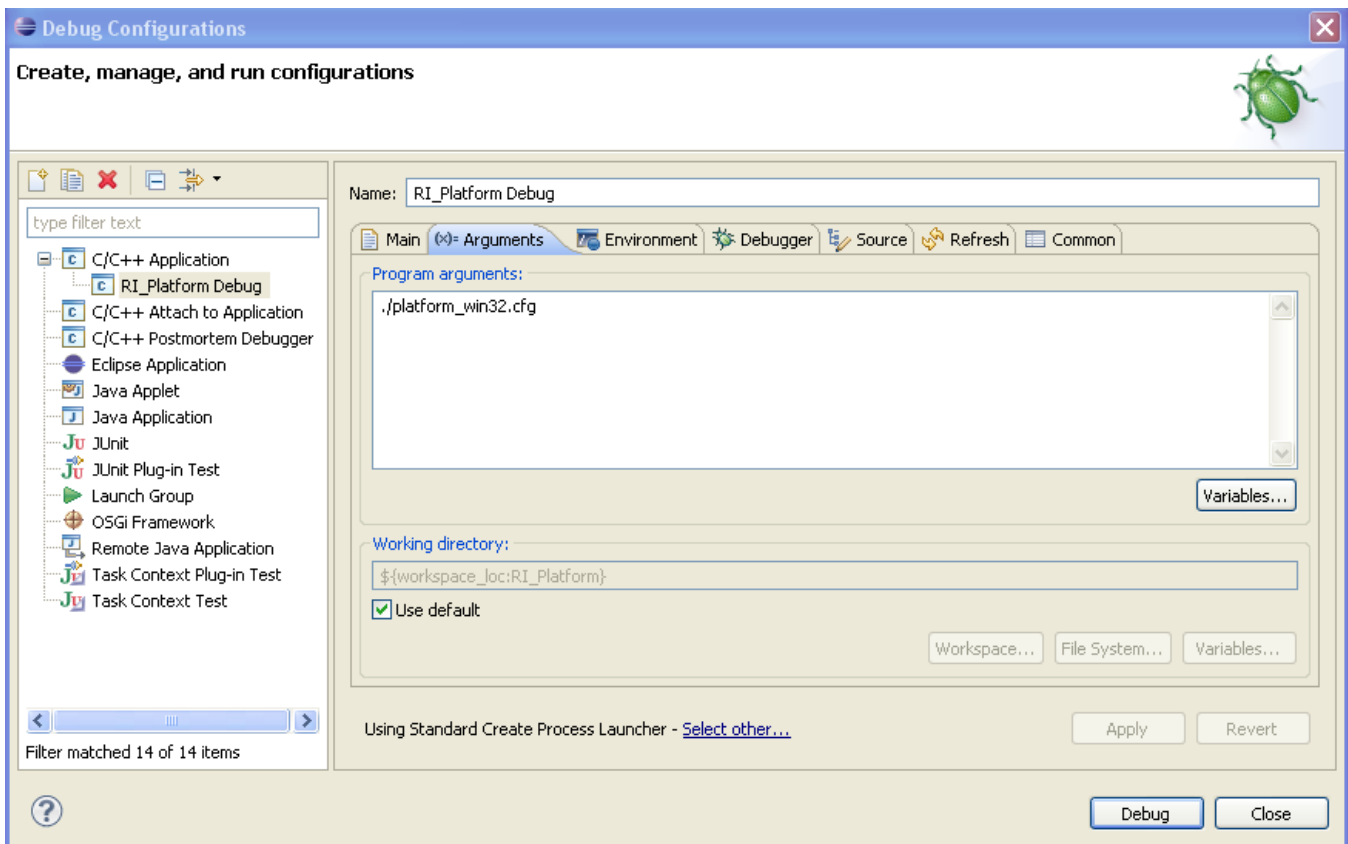
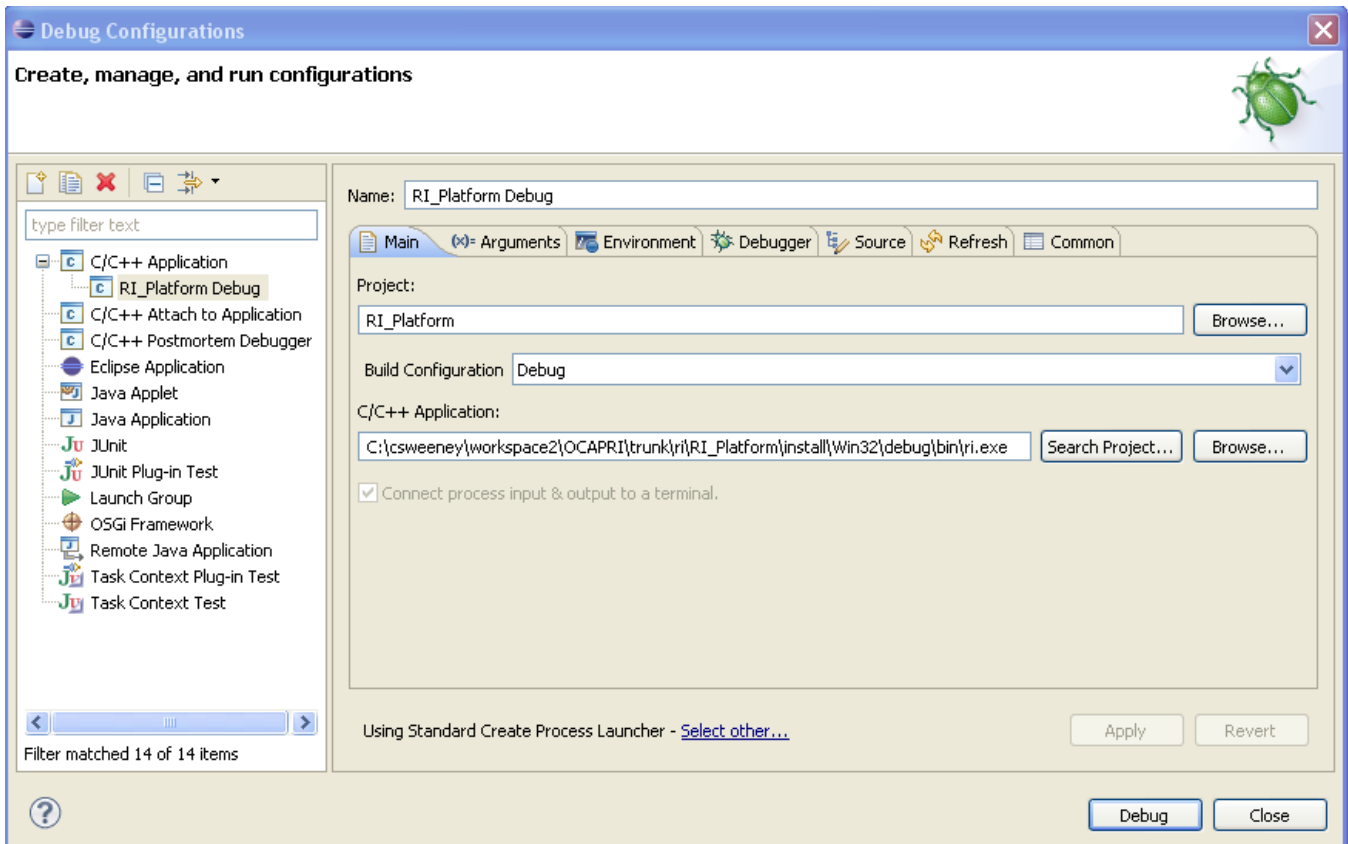
and starts eclipse. For it to work eclipse either has to be on your PATH, or ECLIPSE\_HOME has to be set appropriately.

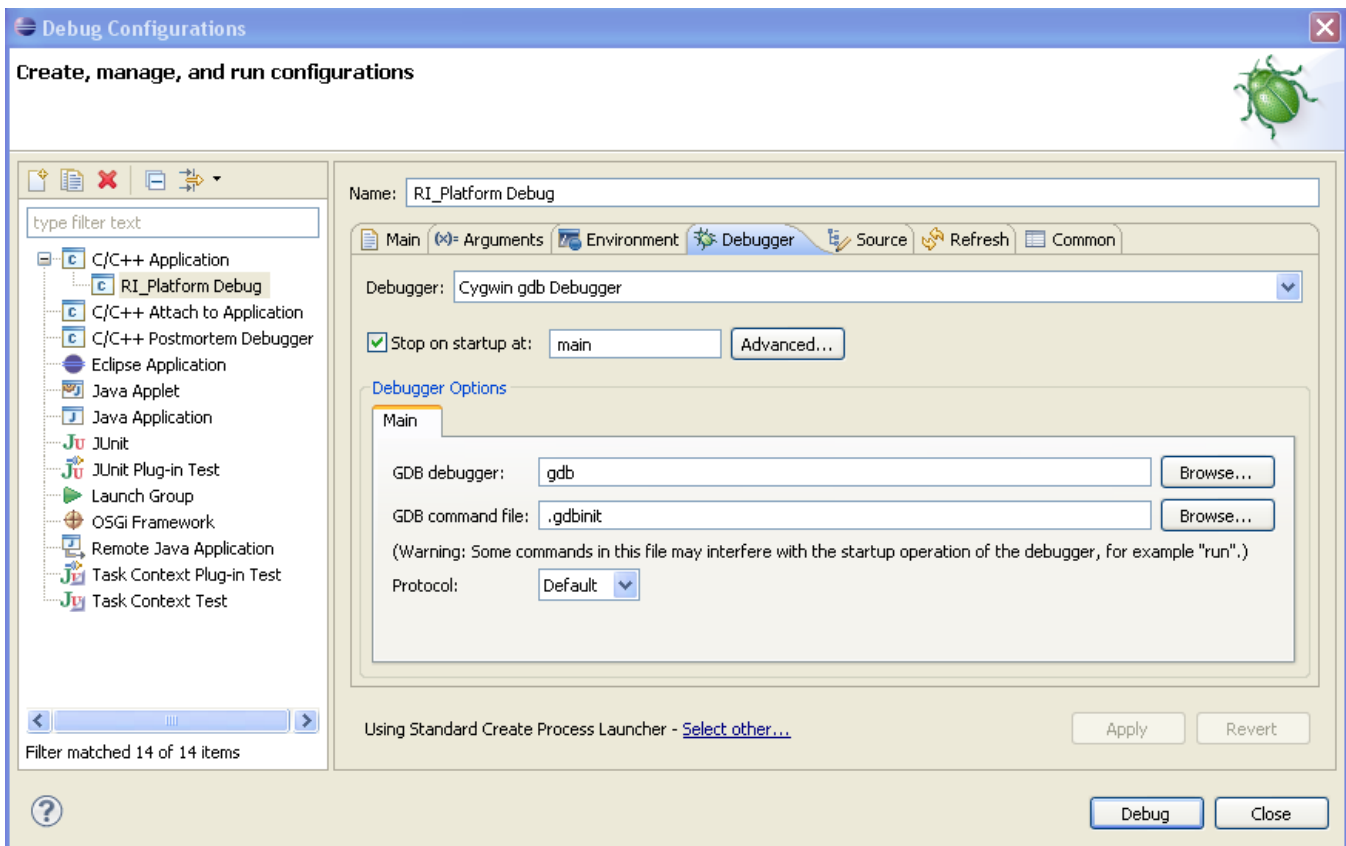
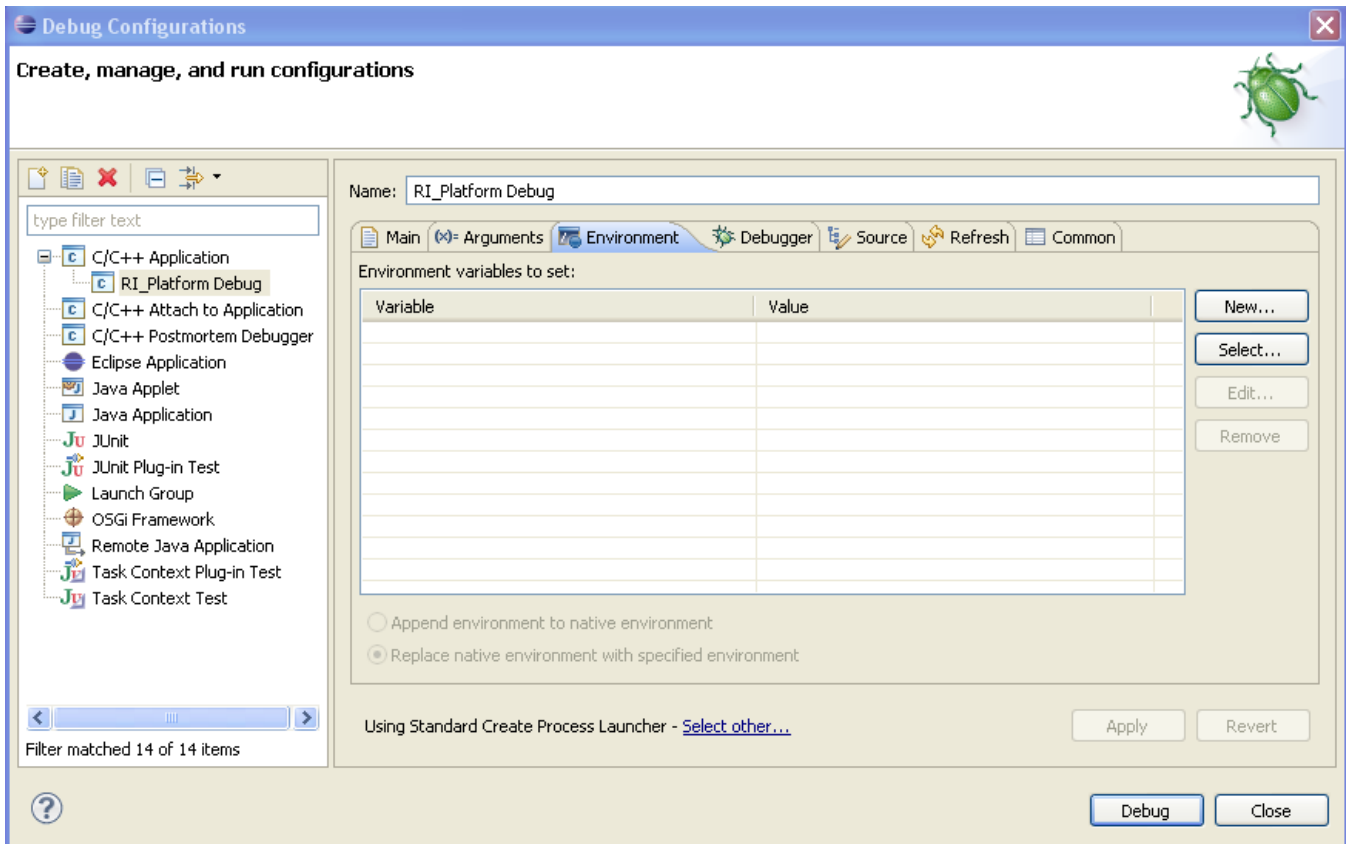
In Eclipse:

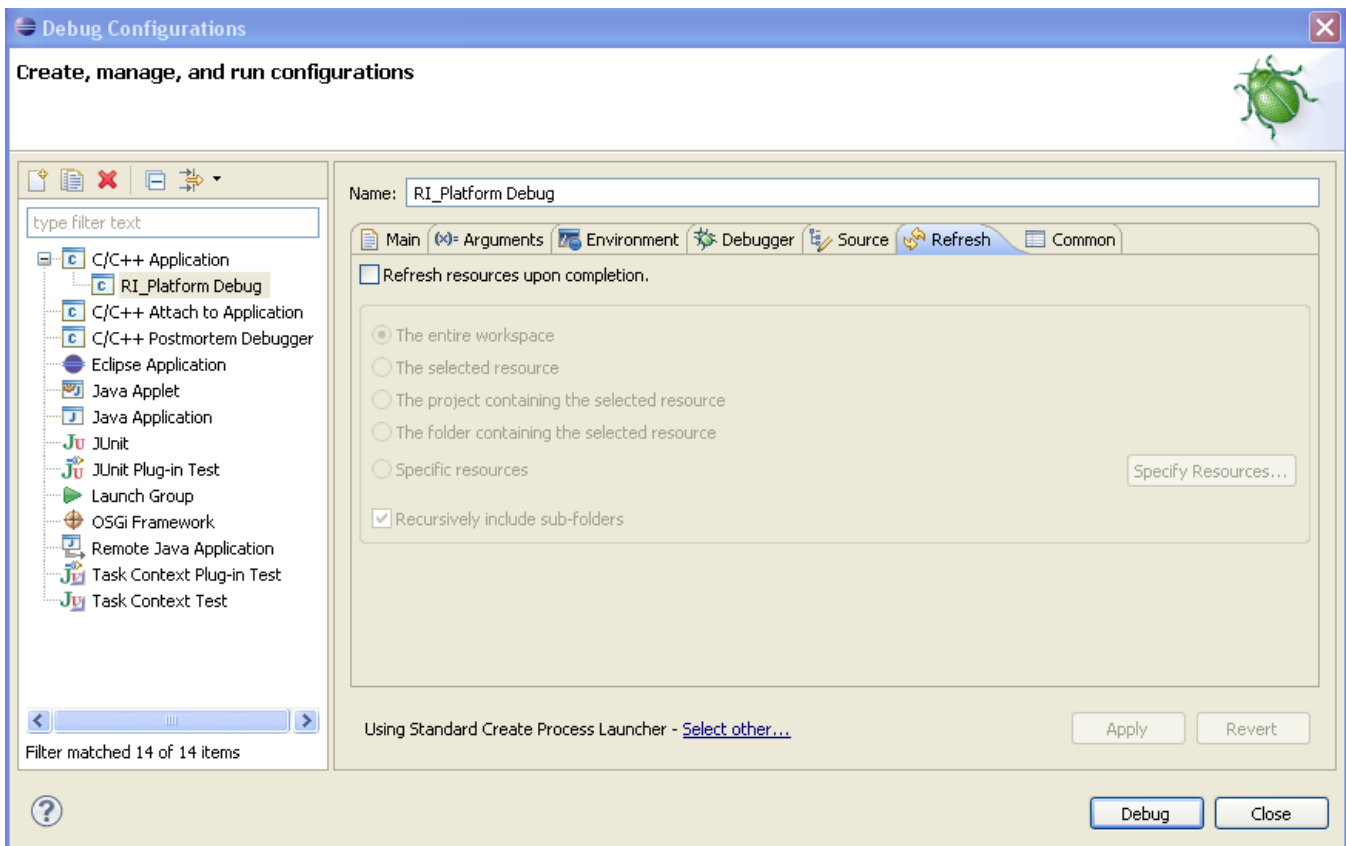
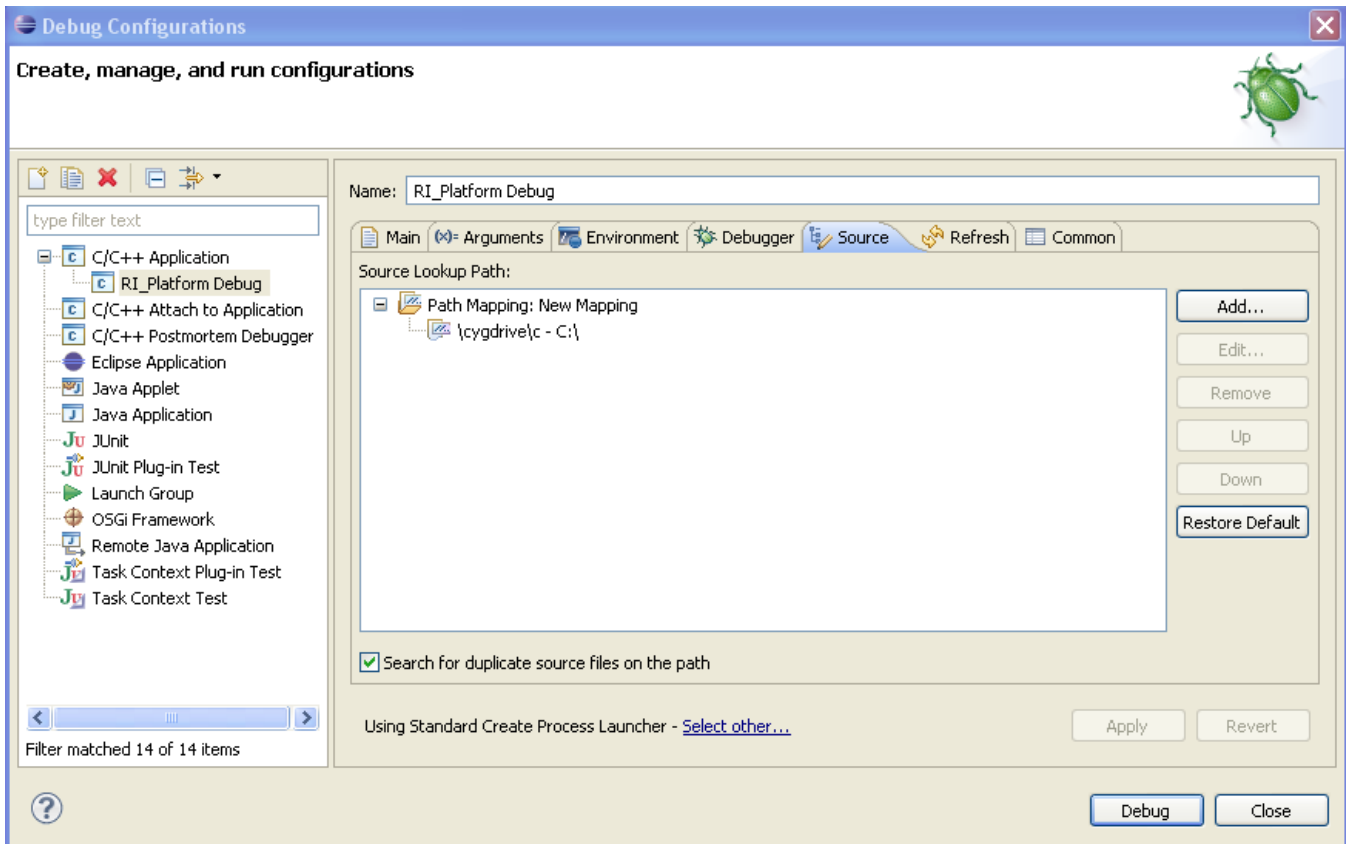
Run->Debug Configurations

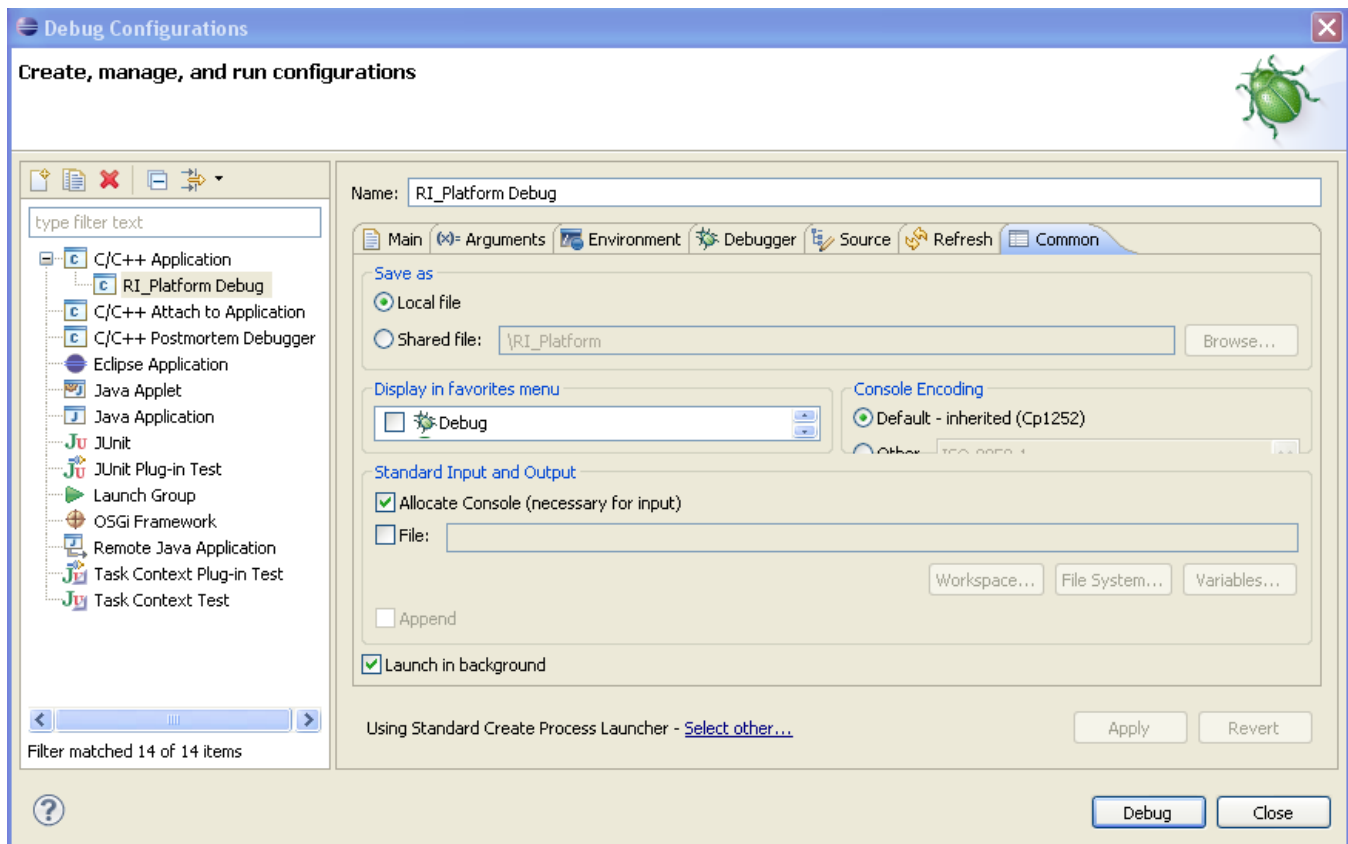
Right click on C/C++ application, choose New.

It is somewhat easier to show screenshots of the configuration tabs:









You should be able to launch a debug session.