

Running the Platform Evaluation Tool

The platform evaluation tool measures the time to perform various fundamental Java and AWT tasks.

To configure the RI:

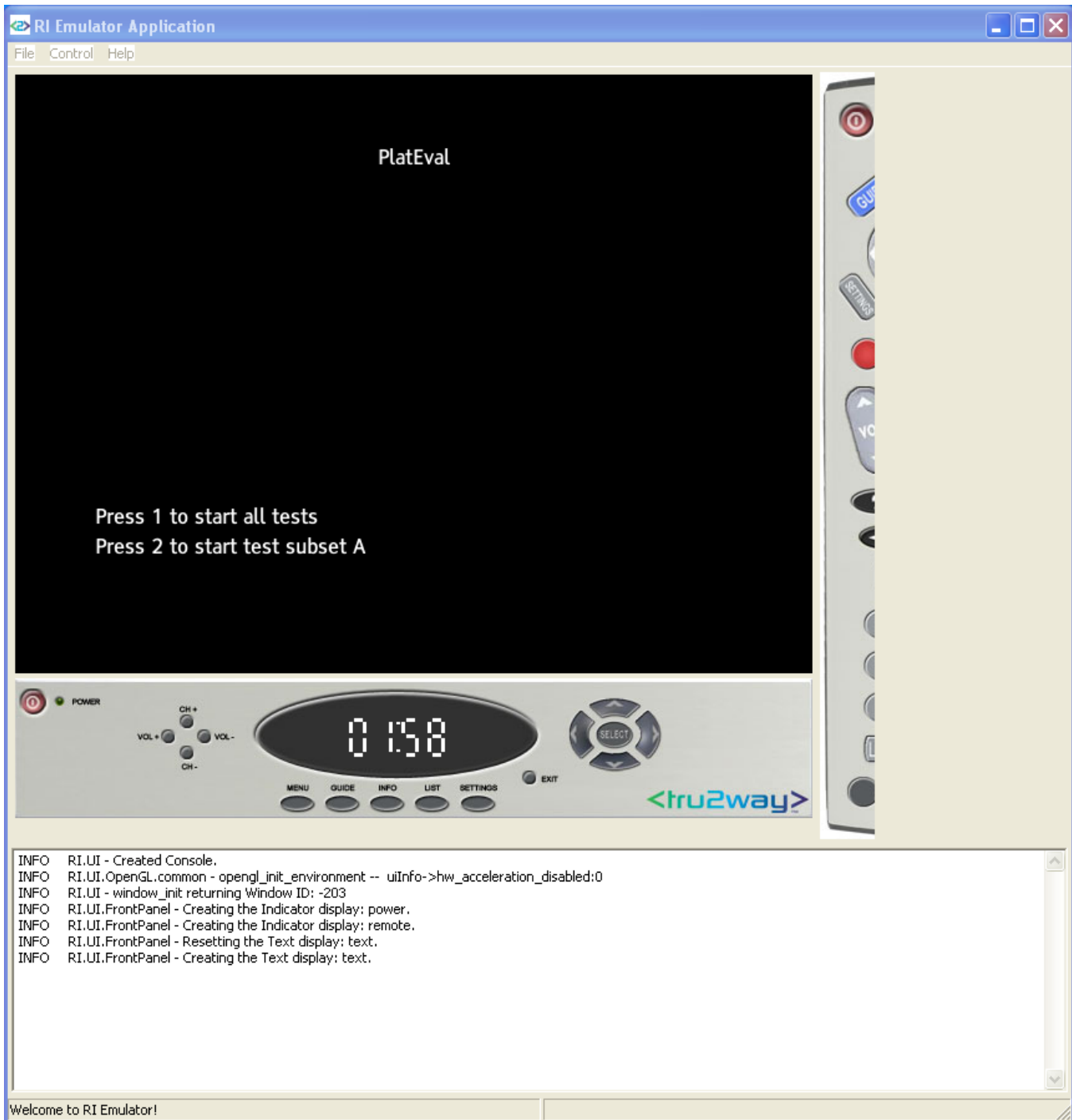
```
> cp $OCAPROOT/apps/vm_perf_test/hostapp.properties $OCAPROOT/bin/$OCAPTC/env/
```

To run the platform evaluation tool:

```
> cd $PLATFORMROOT  
> ./runRI.sh
```

Currently the results are dumped to std out (and thus captured in RILog.txt).

On start up the RI will look like:



Press one, wait a while, and the RI will look like:



Read the README.txt for further information.