

# Installing the RI (1.2.0, Rel A)

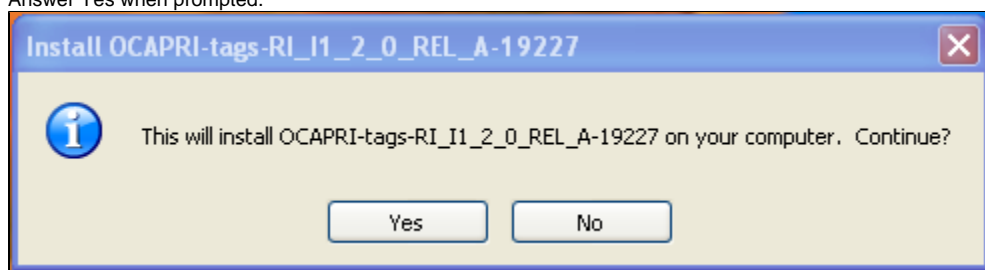
Download the installer [http://ri.opencable.com/ri/builds/releases/1.2.0-RelA/ocap-ri-tags-RI\\_I1\\_2\\_0\\_REL\\_A-19227-Setup.exe](http://ri.opencable.com/ri/builds/releases/1.2.0-RelA/ocap-ri-tags-RI_I1_2_0_REL_A-19227-Setup.exe) (for Windows) or [http://ri.opencable.com/ri/builds/releases/1.2.0-RelA/ocap-ri-tags-RI\\_I1\\_2\\_0\\_REL\\_A-19257-Linux](http://ri.opencable.com/ri/builds/releases/1.2.0-RelA/ocap-ri-tags-RI_I1_2_0_REL_A-19257-Linux) (for Linux)

Double click on the downloaded file. This will start the installer.

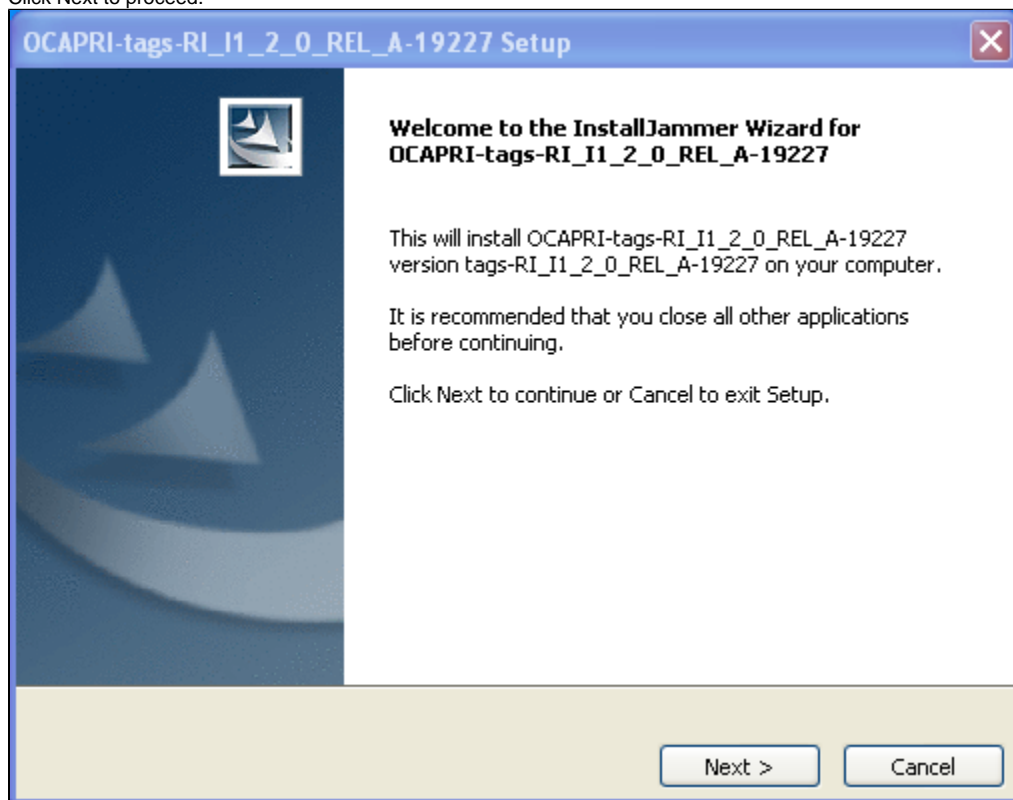
(Optionally) Choose the installer language.



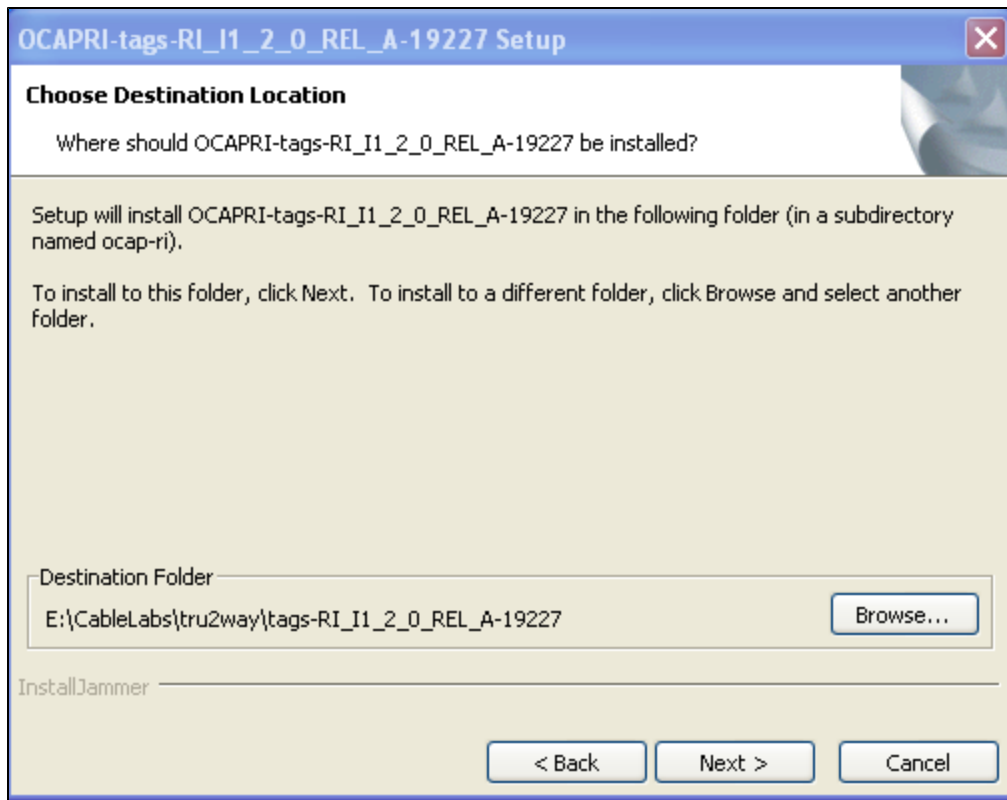
Answer Yes when prompted.



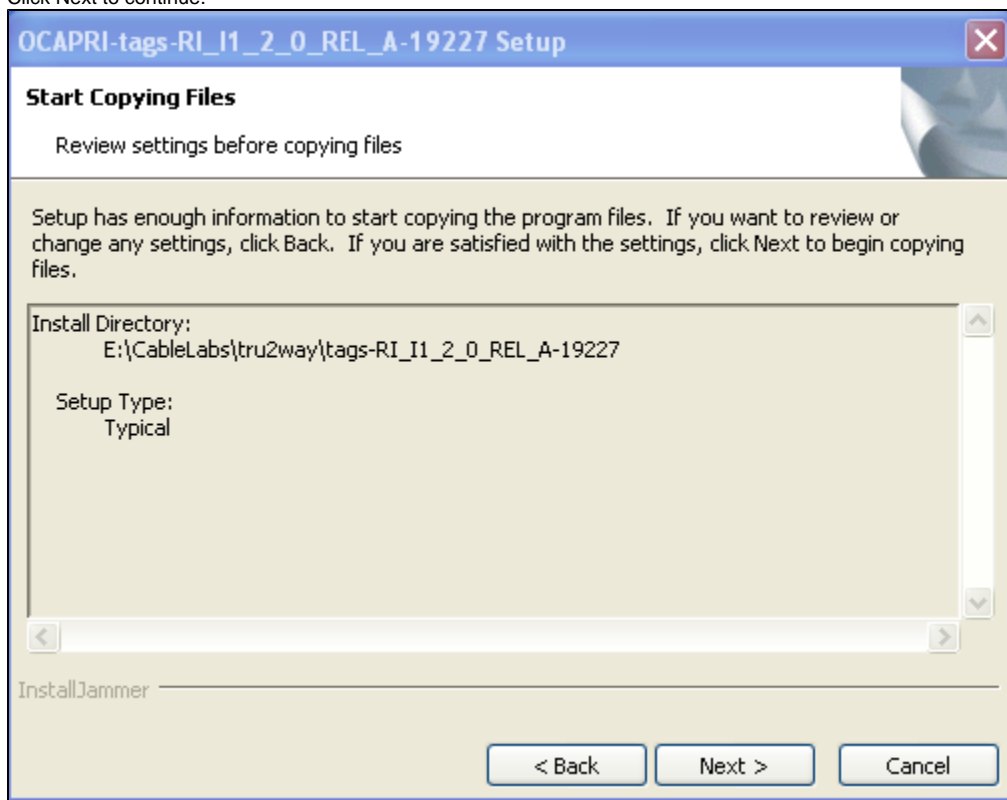
Click Next to proceed.



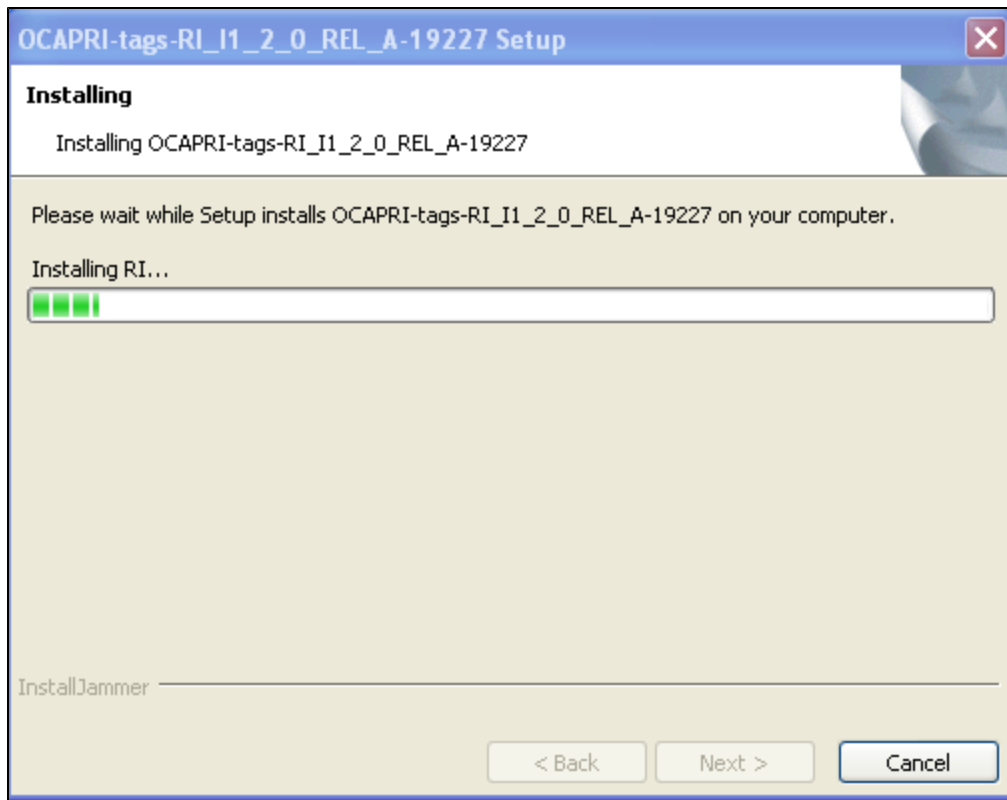
You may choose a different destination folder...



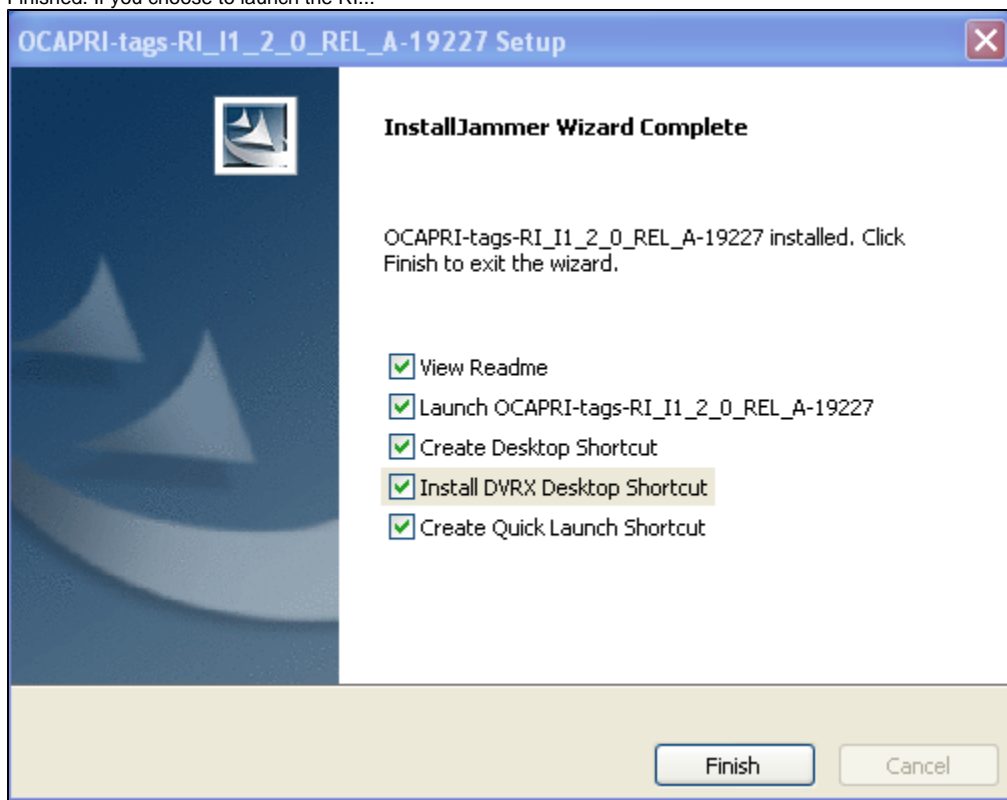
Click Next to continue.



Installation typically takes only a few minutes.



Finished. If you choose to launch the RI...



NOTE: Due to a bug in packaging, the CirclesXlet does not run...